

3050 Spruce Street, Saint Louis, MO 63103, USA

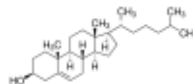
Website: www.sigmaaldrich.comEmail USA: techserv@sial.comOutside USA: eurtechserv@sial.com

Certificate of Analysis

Product Name:

Cholesterol - Sigma Grade, ≥99%

Product Number: C8667
Batch Number: SLCG0969
Brand: SIGMA
CAS Number: 57-88-5
MDL Number: MFCD00003646
Formula: C₂₇H₄₆O
Formula Weight: 386.65 g/mol
Storage Temperature: Store at -20 °C
Quality Release Date: 22 MAY 2020
Recommended Retest Date: MAY 2026



Test	Specification	Result
Appearance (Color)	White to Off White	White
Appearance (Form)	Powder	Powder
Solubility (Color)	Colorless to Very Faint Yellow	Colorless
Solubility (Turbidity)	Clear	Clear
100 mg/mL, CHCl ₃ (APHA NMT 20)		
Proton NMR Spectrum	Conforms to Structure	Conforms
Water (by Karl Fischer)	≤ 1.0 %	0.0 %
Purity (GC)	≥ 99 %	99 %
Carbon	83.0 - 84.7 %	83.8 %



Brian Dulle, Supervisor
Quality Assurance
St. Louis, Missouri US

Sigma-Aldrich warrants, that at the time of the quality release or subsequent retest date this product conformed to the information contained in this publication. The current Specification sheet may be available at Sigma-Aldrich.com. For further inquiries, please contact Technical Service. Purchaser must determine the suitability of the product for its particular use. See reverse side of invoice or packing slip for additional terms and conditions of sale.