

3050 Spruce Street, Saint Louis, MO 63103, USA

Website: [www.sigmaaldrich.com](http://www.sigmaaldrich.com)Email USA: [techserv@sial.com](mailto:techserv@sial.com)Outside USA: [eurtechserv@sial.com](mailto:eurtechserv@sial.com)

## Certificate of Analysis

Product Name:

Indole-3-carbinol

Product Number:

I7256

Batch Number:

MKCJ9582

Brand:

SIGMA

CAS Number:

700-06-1

MDL Number:

MFCD00005632

Formula:

C<sub>9</sub>H<sub>9</sub>NO

Formula Weight:

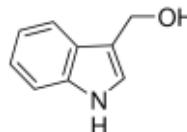
147.17 g/mol

Storage Temperature:

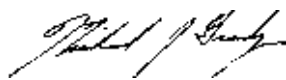
Store at 2 - 8 °C

Quality Release Date:

26 APR 2019



Test	Specification	Result
Appearance (Color)	White to Yellow to Light Brown	White
Appearance (Form)	Powder	Powder
Solubility (Color)	Yellow to Orange	Light Yellow
Solubility (Turbidity)	Clear to Very Hazy	Slightly Hazy
50 mg/mL, EtOH		
Infrared Spectrum	Conforms to Structure	Conforms
Carbon	71.6 - 75.3 %	73.1 %
Nitrogen	9.3 - 9.8 %	9.5 %
Purity (HPLC)	≥ 96 %	100 %



Michael Grady, Manager

Quality Control

Milwaukee, WI US

Sigma-Aldrich warrants, that at the time of the quality release or subsequent retest date this product conformed to the information contained in this publication. The current Specification sheet may be available at Sigma-Aldrich.com. For further inquiries, please contact Technical Service. Purchaser must determine the suitability of the product for its particular use. See reverse side of invoice or packing slip for additional terms and conditions of sale.