

CERTIFICATE OF ANALYSIS

Sigma-Aldrich Laborchemikalien GmbH D-30918 Seelze
Telefon: +49 5137 8238-150

Seelze, 21.08.2014/538226/13/12564

Order-No.:

Customer-No.:

Order-Code:

Quantity:

Production Date: 05.Jun.2013

Expiry Date: 05.Jun.2018

Article/Product: 46158

Batch : SZBD156XV

Dapsone VETRANAL (bis(4-aminophenyl)sulfone)

Reference Material (RM)**1. General Information**

Formula: C₁₂H₁₂N₂O₂S

CAS-No.: [80-08-0]

Usage : Antibiotic

Molar mass: 248.30 g/Mole

Recomm. storage temp.: roomtemp.

The estimated uncertainty of a single measurement of the assay can be expected to be 0.5 % relative (confidence level = 95%, n= 6) whereby the assay measurements are calculated by 100% minus found impurities.

2. Batch Analysis

Identity (NMR)

Assay (HPLC)

Melting range

Water (Karl Fischer)

Date of Analysis

complying	
99.5	area %
179.0-179.4	°C
0.15	%
21.Jun.2013	

3. Advice and Remarks

- The expiry date is based on the current knowledge and holds only for proper storage conditions in the originally closed flasks/ packages.
- Whenever the container is opened for removal of aliquot portions of the substance, the person handling the substance must assure, that the integrity of the substance is maintained and proper records of all its handlings are kept. Special care has to be taken to avoid any contamination or adulteration of the substance.
- We herewith confirm that the delivery is effected according to the technical delivery conditions agreed.
- Particular properties of the products or the suitability for a particular area of application are not assured.
- We guarantee a proper quality within our General Conditions of Sales.

Sigma-Aldrich Laborchemikalien GmbH
Quality Management SA-LC

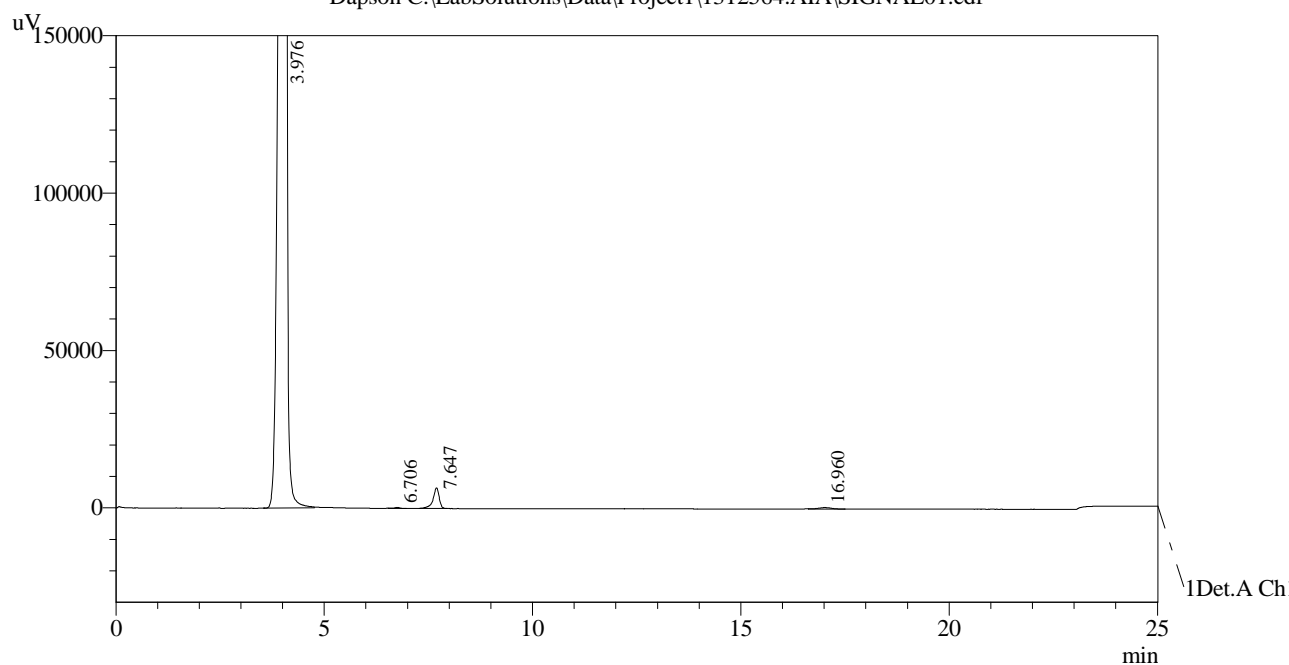
HPLC-Method

Article : Dapsone
Article-No : 46158
Batch : SZBD156XV

Column : L=250mm, ID=4,6mm; Supelcosil LC-18 5µm
Eluent : 30 % Acetonitrile
70 % Water + 1mmol Ammonium acetate
Flow : 1,4ml/min
Detector : UV-296nm
Injection-Volume : 10µl
Sample-Preparation : 0,2mg/ml Eluent
Linearity : checked
Evaluation : Normalisation (uncorrected)
Operator : Schowe

Chromatogram

Dapson C:\LabSolutions\Data\Project1\1312564.AIA\SIGNAL01.cdf



1 Det.A Ch1 /

PeakTable

Ch1

Peak#	Ret. Time	Area	Area %
1	3.976	16163	99.504
2	6.706	3	0.016
3	7.647	68	0.419
4	16.960	10	0.061
Total		16243	100.000